

## **LIGHT WOOD | WOOD | 1"1/2 CONCRETE TOPPING, 5/8" T&G PLYWOOD, INSONOFLOOR (SOPREMA), ACOUSTIVIBE, INSONOMAT (SOPREMA) | FLOATING**

Acoustic performance

AllC: 58 to 62

ASTC: 58 to 62

### **ASSEMBLY DETAILS**

#### **STRUCTURE**

Light wood

#### **ASSEMBLY COMPONENTS**

1"1/2 concrete topping, 5/8" T&G plywood, Insonofloor (Soprema), Acoustivibe, Insonomat (Soprema)

#### **FLOOR TYPE**

Wood

#### **INSTALLATION TYPE**

Floating

#### **CEILING TYPE**

Acoustic insulator

#### **NUMBER OF GYPSUM**

2

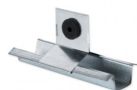


#### **INSONOFLOOR** **(SOPREMA)**



[Plus de détails](#)

#### **ACOUSTIVIBE**



[Plus de détails](#)

#### **INSONOMAT** **(SOPREMA)**



[Plus de détails](#)