

LIGHT WOOD | LAMINATE | 1"1/2 CONCRETE TOPPING, 5/8" T&G PLYWOOD, INSONOFLOOR (SOPREMA), ACOUSTIVIBE, INSONOMAT (SOPREMA) | FLOATING

Acoustic performance

AllC: 58 to 62

ASTC: 58 to 62

ASSEMBLY DETAILS

STRUCTURE

Light wood

ASSEMBLY COMPONENTS

1"1/2 concrete topping, 5/8" T&G plywood, Insonofloor (Soprema), Acoustivibe, Insonomat (Soprema)

FLOOR TYPE

Laminate

INSTALLATION TYPE

Floating

CEILING TYPE

Acoustic insulator

NUMBER OF GYPSUM

2

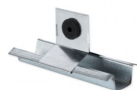


INSONOFLOOR **(SOPREMA)**



Plus de détails

ACOUSTIVIBE



Plus de détails

INSONOMAT **(SOPREMA)**



Plus de détails