

**LIGHT WOOD | WOOD | 1"1/2 CONCRETE TOPPING, 5/8" T&G PLYWOOD, INSONOMAT (SOPREMA), ACOUSTITECH LEAD 3.3, ACOUSTIVIBE | DOUBLE GLUED DOWN**

Acoustic performance

AllC: 57 to 61

ASTC: 58 to 62

**ASSEMBLY DETAILS**

**STRUCTURE**

Light wood

**ASSEMBLY COMPONENTS**

1"1/2 concrete topping, 5/8" T&G plywood, Insonomat (Soprema), AcoustiTECH Lead 3.3, Acoustivibe

**FLOOR TYPE**

Wood

**INSTALLATION TYPE**

Double glued down

**GLUE**

Adhesive AD-532+, Adhesive AD-844 MS, Adhesive AD-316

**CEILING TYPE**

Acoustic insulator

**NUMBER OF GYPSUM**

2



**INSONO  
MAT  
(SOPRE  
MA)**



Plus de

**ACOUST  
ITECH  
LEAD  
3.3**



**ADHESI  
VE  
AD-532  
±**



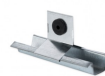
Plus de

**ADHESI  
VE  
AD-844  
MS**



Plus de

**ACOUST  
IVIBE**



Plus de  
détails

**ADHESI  
VE  
AD-316**



Plus de  
détails

détails

Plus de  
détails

détails

détails

[www.acousti-tech.com](http://www.acousti-tech.com)