

LIGHT WOOD | VINYL | 1"1/2 CONCRETE TOPPING, 5/8" T&G PLYWOOD, ACOUSTITECH LV, ACOUSTIVIBE, INSONOMAT (SOPREMA) | FLOATING

Acoustic performance
AIIIC: 58 to 62
ASTC: 58 to 62

ASSEMBLY DETAILS

STRUCTURE

Light wood

ASSEMBLY COMPONENTS

1"1/2 concrete topping, 5/8" T&G plywood, AcoustiTECH LV, Acoustivibe, Insonomat (Soprema)

FLOOR TYPE

Vinyl

INSTALLATION TYPE

Floating

CEILING TYPE

Acoustic insulator

NUMBER OF GYPSUM

2

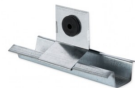


ACOUSTITECH LV



Plus de détails

ACOUSTIVIBE



Plus de détails

INSONOMAT (SOPREMA)



Plus de détails