

LIGHT WOOD | CERAMIC | INSONOMAT (SOPREMA), 1"1/2 CONCRETE TOPPING, 5/8" T&G PLYWOOD, ACOUSTITECH CERAMIC, FLEXIBLE MORTAR, MORTAR, ACOUSTIVIBE | MORTAR

Acoustic performance

AllC: 51 to 56

ASTC: 58 to 62

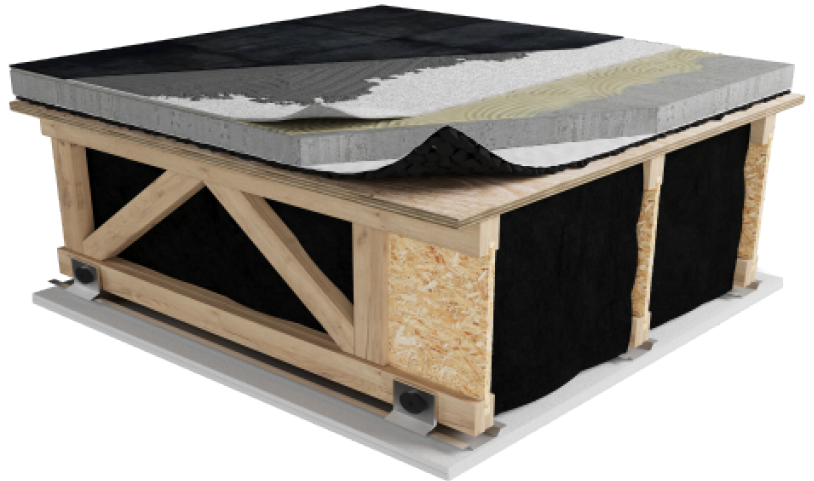
ASSEMBLY DETAILS

STRUCTURE

Light wood

ASSEMBLY COMPONENTS

Insonomat (Soprema), 1"1/2 concrete topping, 5/8" T&G plywood, AcoustiTECH Ceramic, Flexible mortar, Mortar, Acoustivibe



FLOOR TYPE

Ceramic

INSTALLATION TYPE

Mortar

GLUE

Adhesive AD-280

CEILING TYPE

Acoustic insulator

NUMBER OF GYPSUM

2

**INSONO
MAT
(SOPRE
MA)**



Plus de

**ACOUST
ITECH
CERAMI
C**

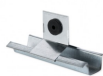


**ADHESI
VE
AD-280**



Plus de
détails

**ACOUST
IVIBE**



Plus de
détails

détails

Plus de
détails

www.acousti-tech.com