

## LIGHT WOOD | LAMINATE | INSONOFLOOR (SOPREMA), 5/8" T&G PLYWOOD, ACOUSTIVIBE | FLOATING

Acoustic performance  
AIIIC: 52 to 55  
ASTC: 53 to 56

### ASSEMBLY DETAILS

#### STRUCTURE

Light wood

#### ASSEMBLY COMPONENTS

Insonofloor (Soprema), 5/8" T&G  
plywood, Acoustivibe

#### FLOOR TYPE

Laminate

#### INSTALLATION TYPE

Floating

#### CEILING TYPE

Acoustic insulator

#### NUMBER OF GYPSUM

2

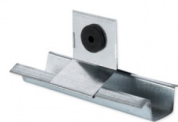


### INSONOFLOOR (SOPREMA)



Plus de détails

### ACOUSTIVIBE



Plus de détails