

## LIGHT WOOD | LAMINATE | ACOUSTIBOARD (SOPREMA), 5/8" T&G PLYWOOD, ACOUSTIVIBE | FLOATING

Acoustic performance  
AIIIC: 57 to 61  
ASTC: 56 to 59

### ASSEMBLY DETAILS

#### STRUCTURE

Light wood

#### ASSEMBLY COMPONENTS

Acoustiboard (Soprema), 5/8" T&G  
plywood, Acoustivibe

#### FLOOR TYPE

Laminate

#### INSTALLATION TYPE

Floating

#### CEILING TYPE

Acoustic insulator

#### NUMBER OF GYPSUM

2

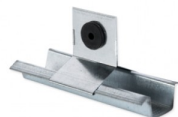


### ACOUSTIBOARD (SOPREMA)



[Plus de détails](#)

### ACOUSTIVIBE



[Plus de détails](#)