

LIGHT WOOD | VINYL | ACOUSTITECH SOFIX, 5/8" PLYWOOD, ACOUSTITECH LEAD 6, ACOUSTIVIBE | FLOATING

Acoustic performance

AllC: 60 to 63

ASTC: 61 to 63

ASSEMBLY DETAILS

STRUCTURE

Light wood

ASSEMBLY COMPONENTS

AcoustiTECH SOFIX, 5/8" plywood, AcoustiTECH Lead 6, Acoustivibe

FLOOR TYPE

Vinyl

INSTALLATION TYPE

Floating

CEILING TYPE

Acoustic insulator

NUMBER OF GYPSUM

2



***OTHER CEILING ISOLATORS AVAILABLE:**

- [RSIC-1](#)
- [RC-1 BOOST](#)
- [TECSOUND CLG 3900](#)

**ACOUSTITECH
SOFIX**



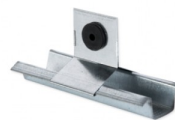
Plus de détails

**ACOUSTITECH LEAD
6**



Plus de détails

ACOUSTIVIBE



Plus de détails