

LIGHT WOOD | CERAMIC | SOPRAWAY NG2 (SOPREMA), 5/8" T&G PLYWOOD, ACOUSTIVIBE | MORTAR

Acoustic performance

AllC: 47 to 52

ASTC: 54 to 57

ASSEMBLY DETAILS

STRUCTURE

Light wood

ASSEMBLY COMPONENTS

Sopraway NG2 (Soprema), 5/8" T&G plywood, Acoustivibe

FLOOR TYPE

Ceramic

INSTALLATION TYPE

Mortar

CEILING TYPE

Acoustic insulator

NUMBER OF GYPSUM

2



***OTHER CEILING ISOLATORS AVAILABLE:**

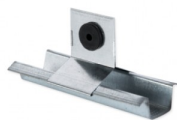
- [RSIC-1](#)
- [RC-1 BOOST](#)
- [TECSOUND CLG 3900](#)

SOPRAWAY NG2
(SOPREMA)



[Plus de détails](#)

ACOUSTIVIBE



[Plus de détails](#)