

LIGHT WOOD | CERAMIC | FERMACELL 2E31, 5/8" T&G PLYWOOD, MORTAR, ACOUSTIVIBE | MORTAR

Acoustic performance
AIIIC: 52 to 56
ASTC: 60 to 62

ASSEMBLY DETAILS

STRUCTURE

Light wood

ASSEMBLY COMPONENTS

Fermacell 2E31, 5/8" T&G plywood,
Mortar, Acoustivibe

FLOOR TYPE

Ceramic

INSTALLATION TYPE

Mortar

GLUE

Mortar (Min. ANSI 118.4)

CEILING TYPE

Acoustic insulator

NUMBER OF GYPSUM

2

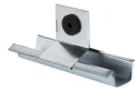


FERMACELL 2E31



Plus de détails

ACOUSTIVIBE



Plus de détails