

LIGHT WOOD | CERAMIC | ACOUSTITECH SOFIX, ACOUSTITECH LEAD 6, ACOUSTIVIBE, 3/4" PLYWOOD | FLOATING

Acoustic performance
AIIIC: 62 to 65
ASTC: 61 to 64

ASSEMBLY DETAILS

STRUCTURE

Light wood

ASSEMBLY COMPONENTS

AcoustiTECH SOFIX, AcoustiTECH Lead 6, Acoustivibe, 3/4" plywood

FLOOR TYPE

Ceramic

INSTALLATION TYPE

Floating

GLUE

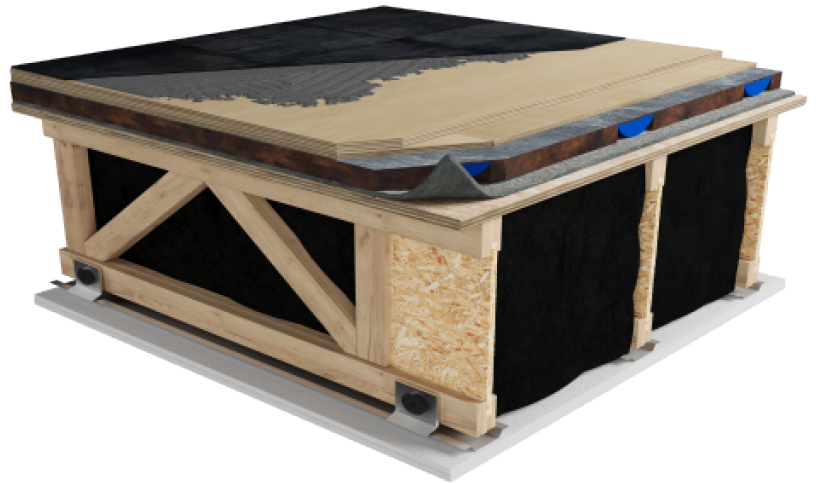
Mortar

CEILING TYPE

Acoustic insulator

NUMBER OF GYPSUM

2



ACOUSTITECH SOFIX



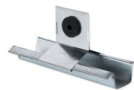
Plus de détails

ACOUSTITECH LEAD 6



Plus de détails

ACOUSTIVIBE



Plus de détails